

# WILDLIFE TADOBA

Tour Code **WLT**

**2 Nights / 3 Days**



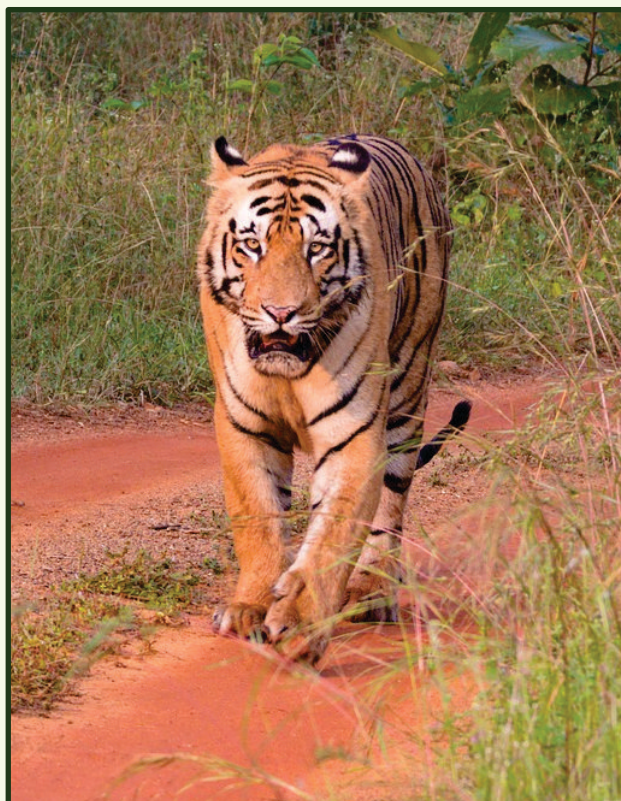
**TOUR DATE :** 15<sup>th</sup> May – 17<sup>th</sup> May 2024

**HOTEL STAY :**

TADOBA : 2 Nights

**TOUR COST :**

Adult (On Twin Sharing Basis)	: Rs. 32000/-
Child (With mattress 5 to 11 Yrs)	: Rs. 24500/-
Child (Without mattress 5 to 11 Yrs)	: Rs. 22500/-
Extra Person	: Rs. 29500/-
Single Adult	: Rs. 45500/-



## ITINERARY

### DAY 1: NAGPUR – TADOBA:

Arrive at Nagpur Railway Station. Meet “Maitri Groups Tour Manager” & Proceed to TadobaAndhari Tiger Reserve, The word ‘Tadoba’ is derived from the name of God “Tadoba” or “Taru,” which is praised by local tribal people of this region & “Andhari” is derived from the name of Andhari river that flows in this area. This Tiger reserve,has about 4-3 tigers, which is one of the highest in India. Check Inn at Resort & Lunch. Enjoy the Nature Trail Walk with the Expert Naturalist & know more about the flora & fauna of the Region. (B, L, D)

### DAY 2: TADOBA:

As we enjoy the 2 Jeep safaris for the day.We explore the forest, famously & wildly seen flora of this park include, Teak, Ain, Bija, Dhaua, Hald, Salai, Semal, Tendu, & many others. Apart from this the list of animals noted in this part include, Tigers, Indian leopards, Sloth bears, Gaur, Nilgai, Dhole, Striped Hyena, Jungle Cats, Sambar, Spotted Deer, Barking Deer, Chital, Marsh Crocodile, Indian Python, Indian Cobra, Crested Serpent Eagle, Peacock, Jewel Beetles, Wolf Spiders etc.(B, L, D)

### DAY 3: TADOBA – NAGPUR:

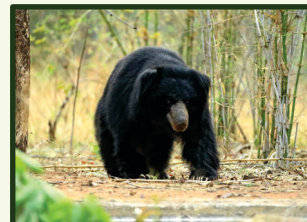
Early Morning proceed to Last safari drive at Tadoba Forest. Lunch & Resot Check Out. Proceed to Nagpur to board schedule train to Home Town. Tour End with Happy Memories. (B,L,D)

## TOUR COST INCLUDES

- 7 Accommodation on twin sharing basis
- All Meals (Breakfast, Lunch, Dinner)
- All transfers & Sightseeing by appropriate vehicle, toll tax, parking charges, driver charges, & fuel cost inclusive.
- 3 Jeep Safari & Tips included as per the program mentioned.
- Expert Tour Manager (Nagpur to Nagpur)
- 5% GST

## TOUR COST EXCLUSIONS

- Rail / Air Fare
- Insurance
- Any extra sightseeing done other than what is mentioned in the itinerary.
- Any increase in prices towards fuel tax, surcharges, any other tax shall be borne by passengers.
- Personal expenses like phone calls, laundry, room heater, alcoholic & non – alcoholic beverages, room service, tea / coffee unless specified.



**MaitriGroups®**

*Whenever & wherever you think of Travelling...!*

📍 Popatlal Compound, Kale Guruji Marg, Opp. Bhandari Co-op. Bank, **DADAR**, Mumbai - 400 028, Maharashtra, INDIA.

📞 **8879793608**

✉️ enquiry.maitrigroups@gmail.com 🌐 www.maitrigroups.com